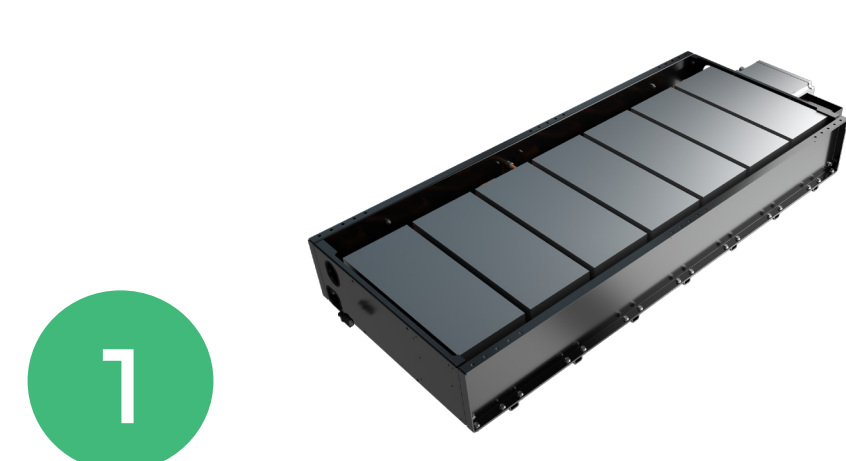
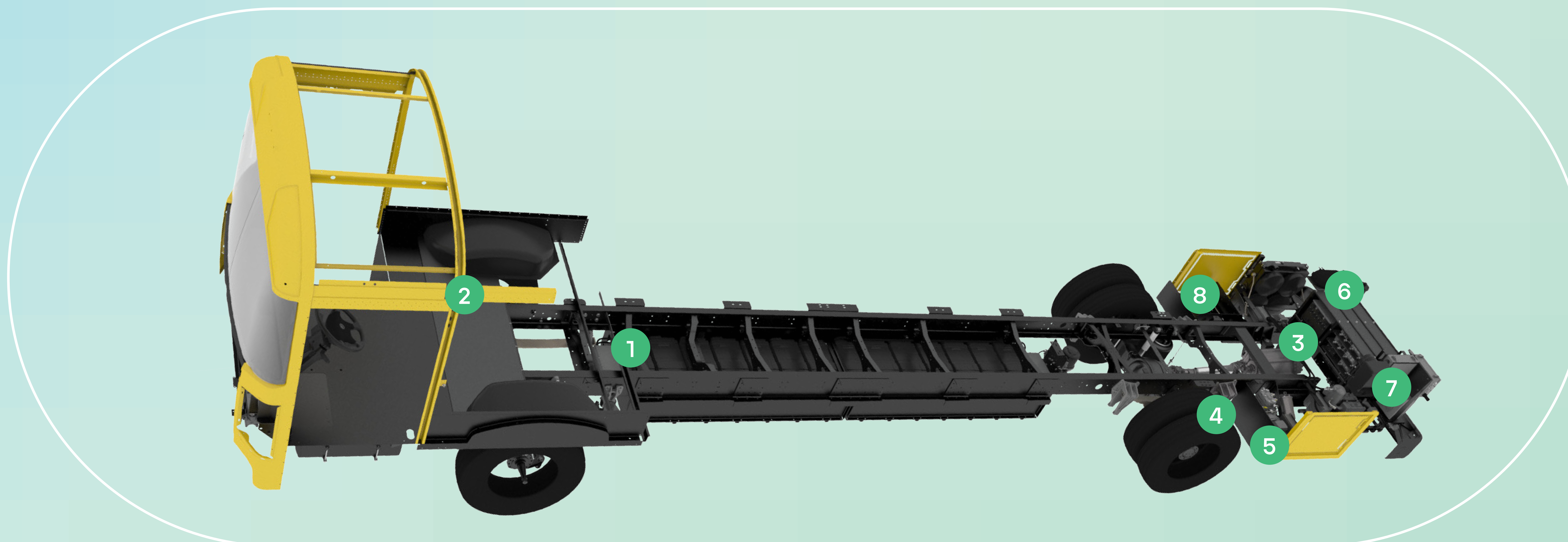


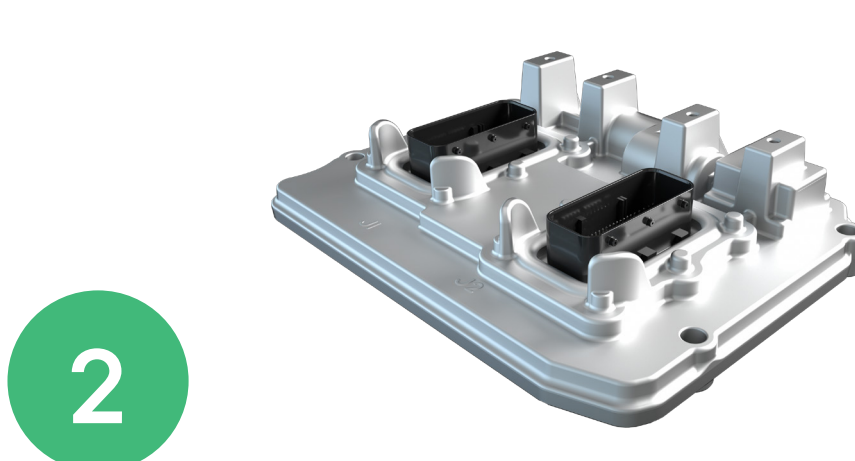
# PowerDrive 7000

The PowerDrive 7000 is Accelera's electric powertrain system for class 7 vehicles. This system is commonly used in type C and type D school buses. Accelera works closely with OEMs to determine which components are better suited for their needs.



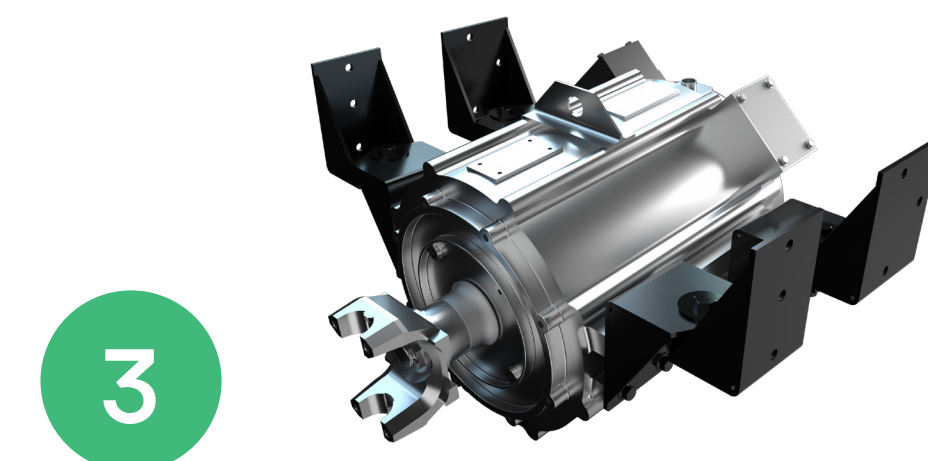
**1**  
**Energy Storage Module**

This is the main power source for PowerDrive™ systems. We are working on the next high-voltage battery program with capacities up to 196kWh.



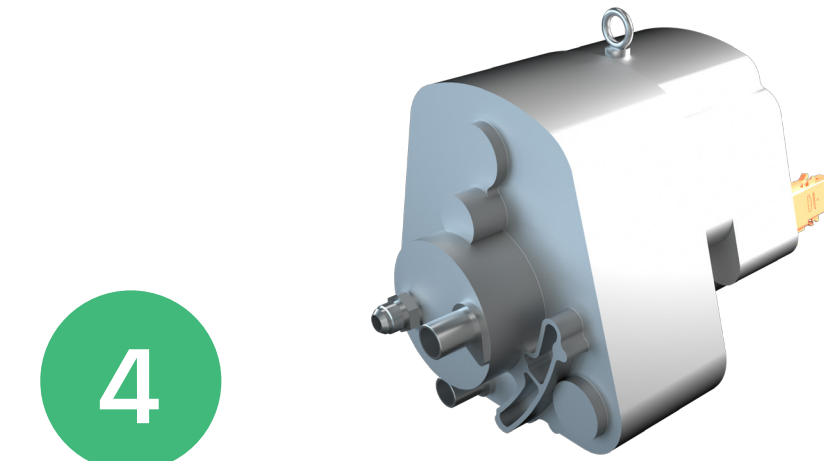
**2**  
**System Control Module**

This component manages and controls the complete drivetrain. Its sophisticated vehicle-control software optimizes vehicle performance and provides diagnostics and fault detection data.



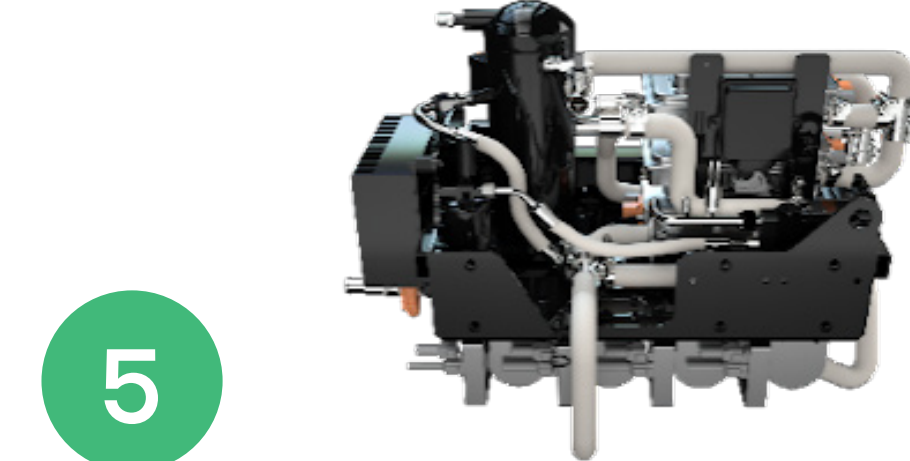
**3**  
**PowerDrive Module**

This is the main drive unit for PowerDrive™ systems. The drive unit is what transfers power from the energy storage to the wheels. This replaces conventional ICE drivetrain systems with equal or better performance.



**4**  
**Air Compressor Module**

This is a highly efficient electric air compressor. It provides air to conventional air brake systems and accessories.



**5**  
**Thermal Management Module**

This is the central location for pumps, heaters and A/C chillers for the PowerDrive™ system. Vehicle HVAC intelligently and efficiently maintains operating temperature of the high-voltage battery and PowerDrive™ system components.



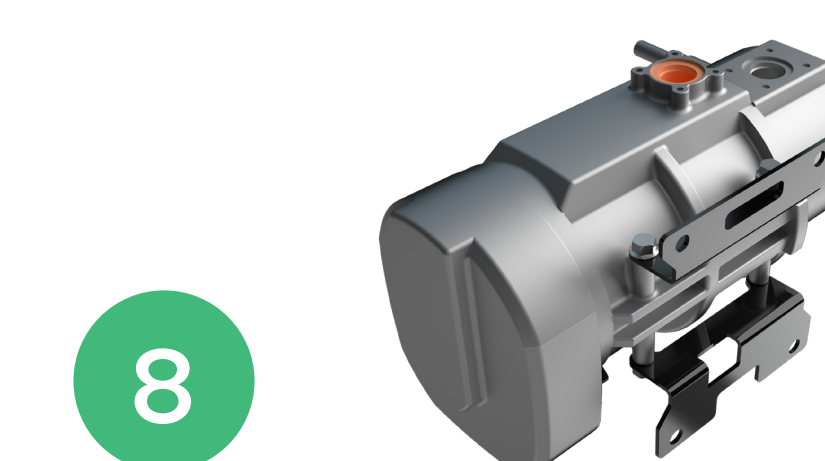
**6**  
**High-Voltage Module**

This is the centralized hub for high-voltage connections in the PowerDrive™ system. This component distributes high-voltage power from the energy management system to all vehicle accessories. Motors are modular and configurable for EV systems.



**7**  
**Low-Voltage Module**

This is the control module for all low-voltage signals. It's also the main hub for low-voltage power, control and feedback signals for the PowerDrive™ system. It centralizes, fuses and relays for easy installation and ease of service.



**8**  
**Hydraulic Power Steering Module**

This electrohydraulic pump provides hydraulic assist for power-steering systems. It replaces conventional gear- or belt-driven pumps with a much more silent operation.